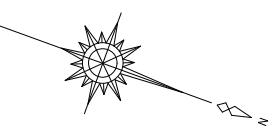
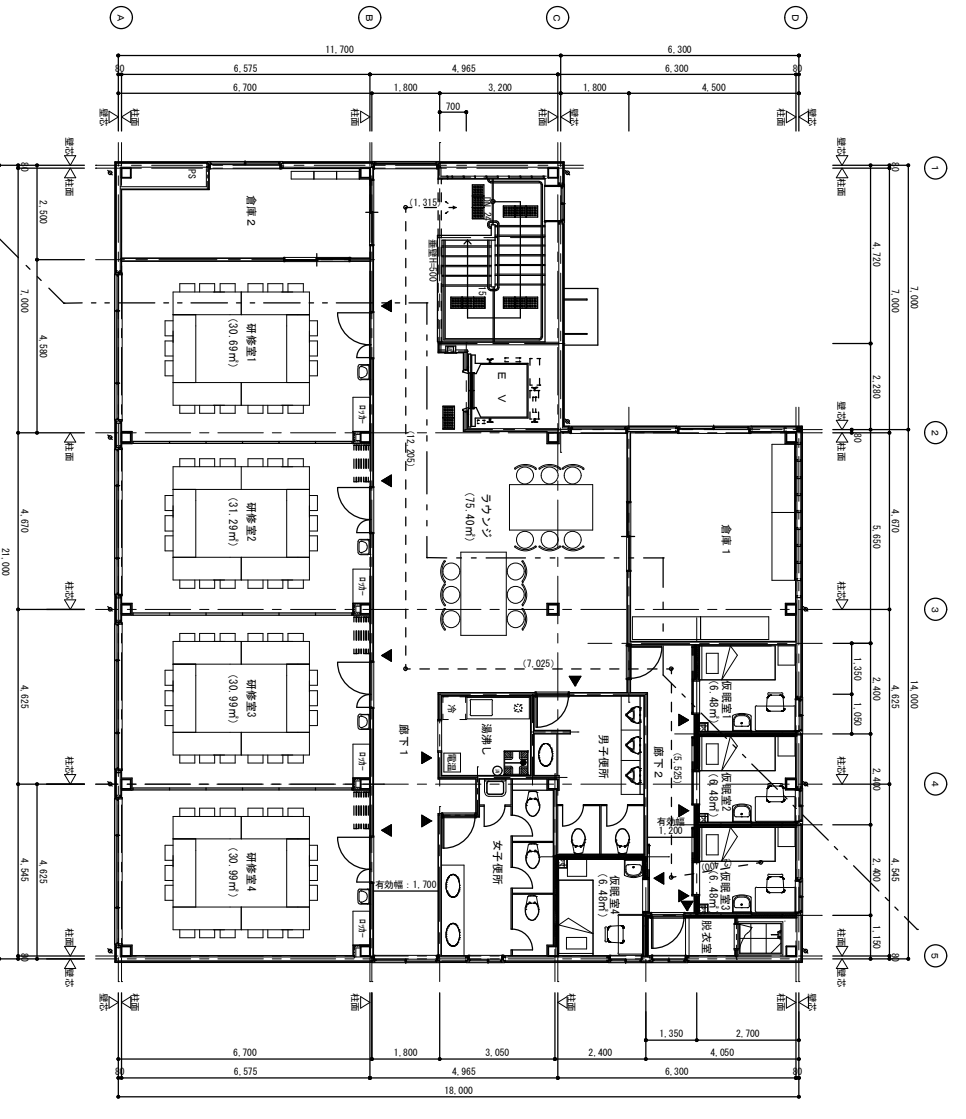
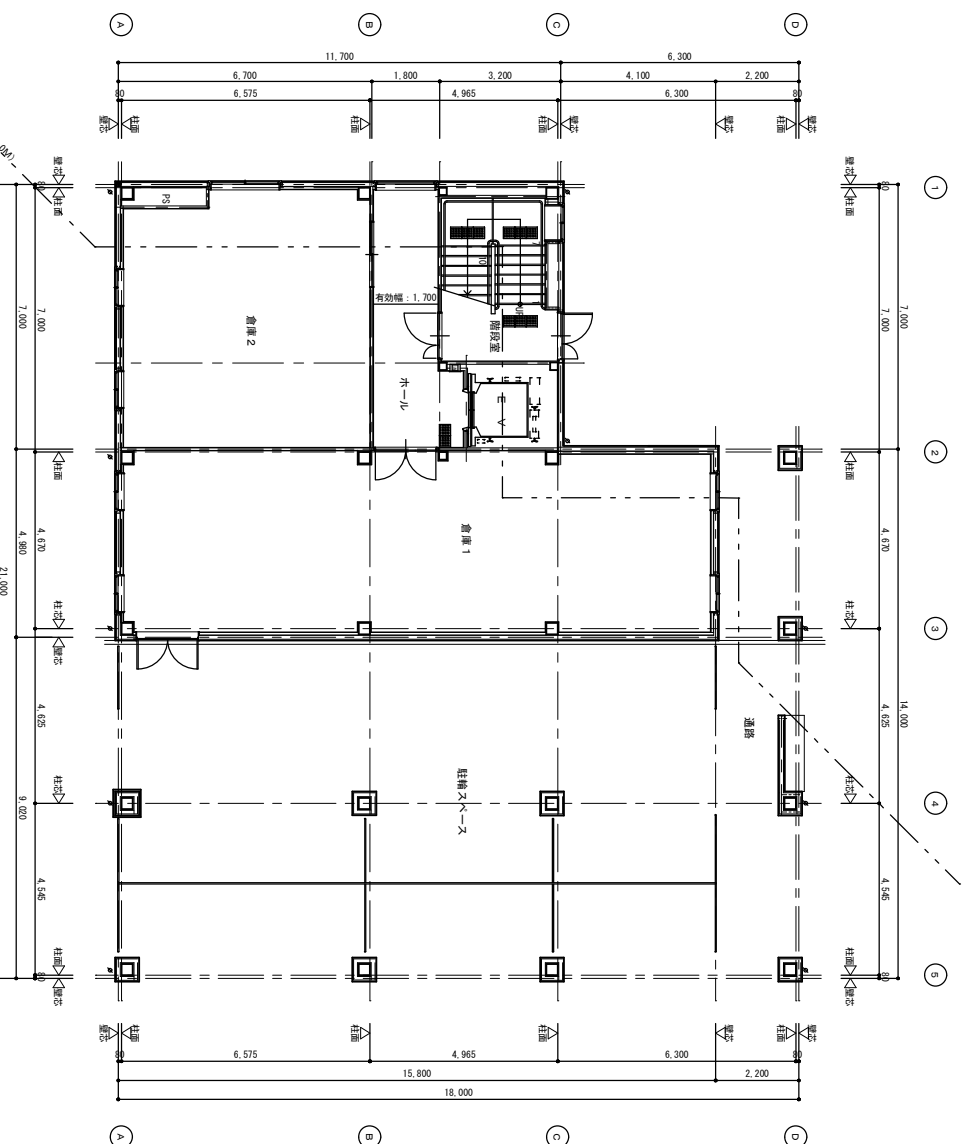
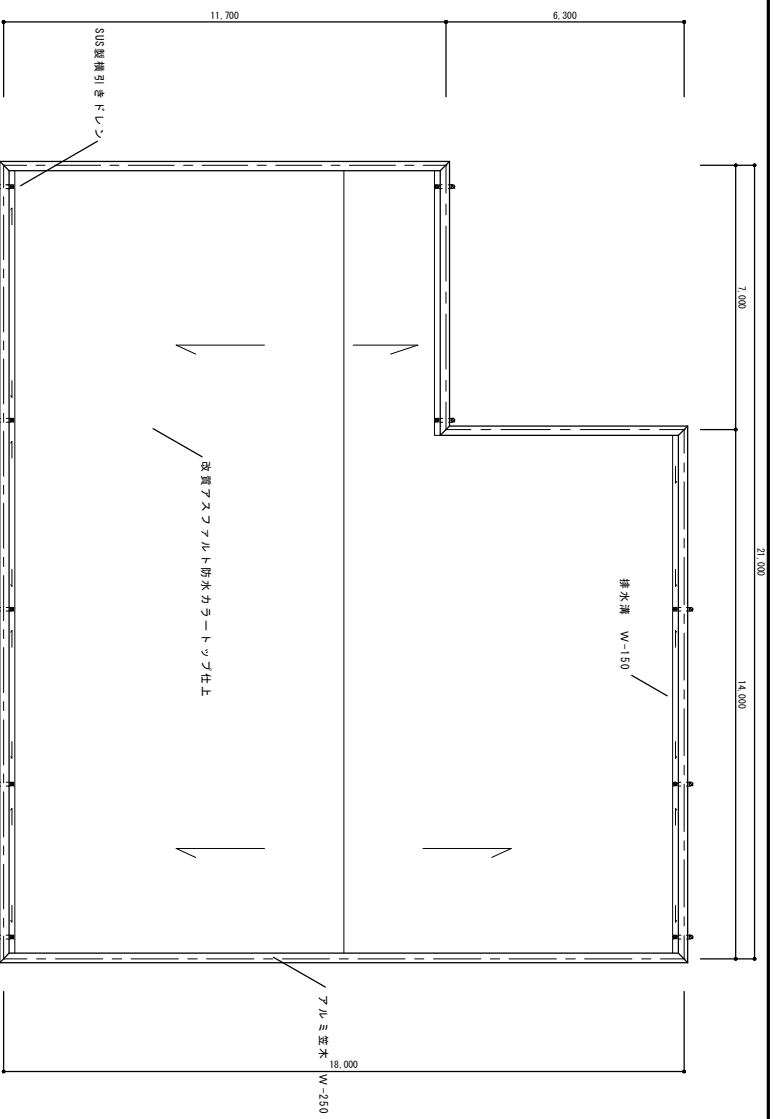


月別	有効開口部の積算	柱間壁	柱間壁	柱間壁1~4	柱間壁
1	柱間壁1 30.69 =4.83x6.70 =3.92x1.71x1.0x1 =4.92x1.71x0.5x1 =3.92x0.78x0.5x1	柱間壁3 30.99 =4.83x6.70 =3.92x1.71x1.0x1 =4.92x1.71x0.5x1 =3.92x0.78x0.5x1	柱間壁2 31.29 =4.87x6.70 =3.92x1.71x1.0x1 =4.92x1.71x0.5x1 =3.92x0.78x0.5x1	柱間壁1~4 6.48 =2.40x2.70 =2.82x1.41x1.0x1 =2.82x1.41x0.5x1 =2.82x0.78x0.5x1	柱間壁 11.51 =1.51x5.6x0.5x1+1.6x1.78x1.6x1.58x1 =1.51x5.6x0.5x1+1.6x1.78x0.5x1 =1.51x5.6x0.5x1+1.6x0.78x0.5x1 =2.19x1.0x1.0=2.19
2	柱間壁1 30.69 =4.83x6.70 =3.92x1.71x1.0x1 =4.92x1.71x0.5x1 =3.92x0.78x0.5x1	柱間壁3 30.99 =4.83x6.70 =3.92x1.71x1.0x1 =4.92x1.71x0.5x1 =3.92x0.78x0.5x1	柱間壁2 31.29 =4.87x6.70 =3.92x1.71x1.0x1 =4.92x1.71x0.5x1 =3.92x0.78x0.5x1	柱間壁1~4 6.48 =2.40x2.70 =2.82x1.41x1.0x1 =2.82x1.41x0.5x1 =2.82x0.78x0.5x1	柱間壁 11.51 =1.51x5.6x0.5x1+1.6x1.78x1.6x1.58x1 =1.51x5.6x0.5x1+1.6x1.78x0.5x1 =1.51x5.6x0.5x1+1.6x0.78x0.5x1 =2.19x1.0x1.0=2.19
3	柱間壁1 30.69 =4.83x6.70 =3.92x1.71x1.0x1 =4.92x1.71x0.5x1 =3.92x0.78x0.5x1	柱間壁3 30.99 =4.83x6.70 =3.92x1.71x1.0x1 =4.92x1.71x0.5x1 =3.92x0.78x0.5x1	柱間壁2 31.29 =4.87x6.70 =3.92x1.71x1.0x1 =4.92x1.71x0.5x1 =3.92x0.78x0.5x1	柱間壁1~4 6.48 =2.40x2.70 =2.82x1.41x1.0x1 =2.82x1.41x0.5x1 =2.82x0.78x0.5x1	柱間壁 11.51 =1.51x5.6x0.5x1+1.6x1.78x1.6x1.58x1 =1.51x5.6x0.5x1+1.6x1.78x0.5x1 =1.51x5.6x0.5x1+1.6x0.78x0.5x1 =2.19x1.0x1.0=2.19
4	柱間壁1 30.69 =4.83x6.70 =3.92x1.71x1.0x1 =4.92x1.71x0.5x1 =3.92x0.78x0.5x1	柱間壁3 30.99 =4.83x6.70 =3.92x1.71x1.0x1 =4.92x1.71x0.5x1 =3.92x0.78x0.5x1	柱間壁2 31.29 =4.87x6.70 =3.92x1.71x1.0x1 =4.92x1.71x0.5x1 =3.92x0.78x0.5x1	柱間壁1~4 6.48 =2.40x2.70 =2.82x1.41x1.0x1 =2.82x1.41x0.5x1 =2.82x0.78x0.5x1	柱間壁 11.51 =1.51x5.6x0.5x1+1.6x1.78x1.6x1.58x1 =1.51x5.6x0.5x1+1.6x1.78x0.5x1 =1.51x5.6x0.5x1+1.6x0.78x0.5x1 =2.19x1.0x1.0=2.19
5	柱間壁1 30.69 =4.83x6.70 =3.92x1.71x1.0x1 =4.92x1.71x0.5x1 =3.92x0.78x0.5x1	柱間壁3 30.99 =4.83x6.70 =3.92x1.71x1.0x1 =4.92x1.71x0.5x1 =3.92x0.78x0.5x1	柱間壁2 31.29 =4.87x6.70 =3.92x1.71x1.0x1 =4.92x1.71x0.5x1 =3.92x0.78x0.5x1	柱間壁1~4 6.48 =2.40x2.70 =2.82x1.41x1.0x1 =2.82x1.41x0.5x1 =2.82x0.78x0.5x1	柱間壁 11.51 =1.51x5.6x0.5x1+1.6x1.78x1.6x1.58x1 =1.51x5.6x0.5x1+1.6x1.78x0.5x1 =1.51x5.6x0.5x1+1.6x0.78x0.5x1 =2.19x1.0x1.0=2.19

※ 柱間壁1の柱間壁は、有効開口部の積算に含めない。
※ 柱間壁2の柱間壁は、有効開口部の積算に含めない。



NOTE

DRAWN	大村 修	DATE	
CHECK		DATE	

一般建築士(本部)登録220932号 大村 修
一般建築士事務所 建築告知事案第(9)152号

株式会社 大村建築設計事務所
一般建築士事務所 TEL (0749)92-2061 FAX (0749)92-0351

TITLE
総合医療センター研修棟増築工事

SHEET TITLE	平面図
CHECKED	量規作成

SCALE
A1:1/100 A3:1/200

MANAGED	CHECKED	DRAWN	DRAWN

A-08
27枚/内